

EVENT | INTERIORS | PARTNERSHIP

## Cereal Abode

AT GREENWICH PENINSULA

*FURNISHED WITH BOTH MODERN AND VINTAGE PIECES, THE ABODE REFLECTS AN ATTITUDE TOWARDS DESIGN.*

The Cereal Abode is as much an investigation of space, form and colour, as it is an opportunity to create a beautiful, functional living space. Created in partnership with *Greenwich Peninsula* and *Aucoot*, Cereal has styled the interior of a new duplex penthouse, which is for sale on Greenwich Peninsula – an area of London undergoing a cultural transformation. Conran's interior fit out of black wooden panelling, marble tiling, and poured concrete floors provided an understated canvas for moody greys and darker wood, with splashes of an accent colour in each room.

Furnished with both modern and vintage pieces, the Abode reflects an attitude towards design. Much of the inspiration for the project stemmed from the pieces themselves – as they were discovered in the early stages of the curation process, and as they became part of a composition beyond individual objects. Sculptural furniture inspired by both natural and architectural forms sits alongside fine art and unique objects. 'As a result of us pulling each other in different directions towards our own ideals, what we have is something that is both quite abstract and quite playful,' Cereal's creative director, Rich Stapleton, says of the collaboration between himself, editor-in-chief Rosa Park, and interior stylist Nathalie Schwer.

Subdued red walls in the entrance begin a series of shifts in the colour of the matte, lime wash paint, which follow the daylight from darker to lighter, in dialogue with the interior architecture. On the lower level, a work space is followed by a multipurpose room. 'We wanted to explore the luxury of having space to fold out your interests in your own home,' explains Nathalie, 'perhaps meditation, reading, or laying out creative projects.' The play of textures in this room includes the velvet of a slim Martin Visser sofa bed, and a glossy Karakter stool.

Upstairs, an extendable PK54 dining table by Fritz Hansen in unpolished white marble, surrounded by walnut Cherner chairs, marks the brightest point in the space. Floor to ceiling windows grant an open view of the Thames – a muted backdrop flanked by wharfs and dotted with boats. Outside, a broad terrace hovers above the shore. Removing the two mainstays of most living areas, the sofa and the television, opened up greater possibilities, and a fluffy sheepskin day bed by Bruno Mathsson became a central piece, alongside McCollin Bryan's rust red coffee bean table. Two antique Børge Mogensen chairs, presided over by a shadowy Michael Wall painting, were chosen on the last minute for their 'laid back seriousness'. Transitional spaces offer slower moments of reflection on more purely aesthetic pieces; a Rudd Jan Kokke armchair sits secluded in a dark grey reading nook behind a glass partition, and artworks are ensconced in a dim corridor leading to the bedroom.

Also placed around the Abode are paintings by Rosemarie Auberson, sculptures by Mari-Ruth Oda, and marble plinths from Menu; furniture and design objects from Jacksons, Béton Brut, Conran, Else Schneider, Please Wait To Be Seated, Karakter, Frama, Astep, & Tradition, Hay and Flos; books from Phaidon; bathroom products from Susanne Kaufmann; and clothing from Sunspel. The bed and wooden screens are bespoke designs for Abode, designed by Nathalie Schwer and made by Bjarke A. Kvich of Woodenmind.

WORDS: *Ruth Ainsworth*  
PHOTOS: *Rich Stapleton*  
STYLING: *Nathalie Schwer*  
PARTNER: *Greenwich Peninsula*  
SALES: *Aucoot*



Room divider by Nathalie Schwer, Bruno Mathsson daybed & chrome floor lamp from Jacksons, rug from Conran, coffee bean table by McCollin Bryan, chairs from Else Schneider, painting by Michael Wall, wall lamp by Frama



Painting by Michael Wall



Table from Else Schneider



Bruno Mathsson daybed from Jacksons



Coffee Bean table by McCollin Bryan



Vases from Jacksons



Ruud Jan Kokke Latjesstoel armchair from Béton Brut



Living & dining room



Cherner classic walnut chair from Conran, PK54 dining table from Fritz Hansen



Olive tree



PK54 dining table from Fritz Hansen, Cherner classic walnut chairs from Conran, ceiling lamp from Else Schneider, vases from Jacksons, sculpture by Mari-Ruth Oda, marble plinth by Menu, Bruno Mathsson daybed from Jacksons



Bookshelf by Frama, books from Phaidon



Moor rug by &Tradition



Painting by Rosemarie Auberson, moor rug by &Tradition, chair & Martin Visser sofa from Béton Brut



Coat rack & méribel stool from Conran, vase from Jacksons



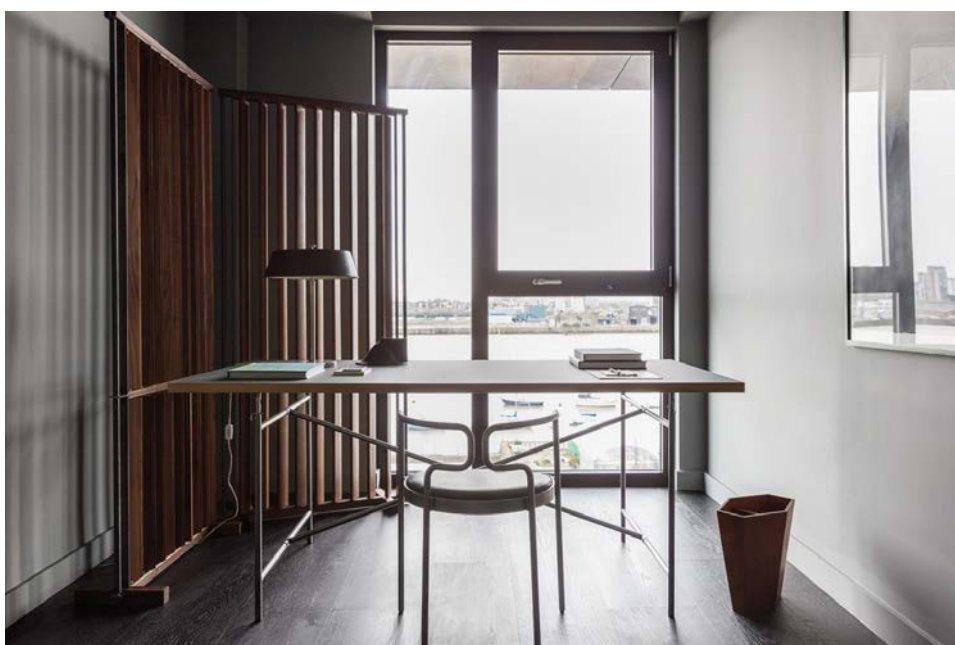
Room divider by Nathalie Schwer, lamp from Jacksons, desk by Please Wait To Be Seated



'Haze' print in forest green wooden frame



Vase from Jacksons



Home office



Sergio Mazza Narcisso nickle mirror from Béton Brut



Sculpture by Mari-Ruth Oda



Pendant lamp by Astep, vase from Jacksons



Bed frame by Nathalie Schwer, wall lamps by Astep



Sculpture by Mari-Ruth Oda, painting by Michael Wall



Waterman Gardens at Greenwich Peninsula



View from the penthouse

FURTHER READING



ARCHITECTURE | SINGAPORE

### Green Architecture

BUILDING A GREENER CITY



INTERIORS

### The Village by &Tradition

8 JUNE, 2015



INTERIORS | NEW YORK | USA

### The Musket Room

RESTAURANT DESIGN



INTERIORS

### A Ton of Clay

9 DECEMBER, 2015

Cereal is a biannual, travel & style magazine based in the United Kingdom. Each issue focusses on a select number of destinations, alongside engaging interviews and stories on unique design, art, and fashion.

© CEREAL

#### INFO

- [Stockists](#)
- [Contact](#)
- [Career](#)

#### MEDIA

- [Playlists](#)
- [Film](#)

#### NEWSLETTER

